

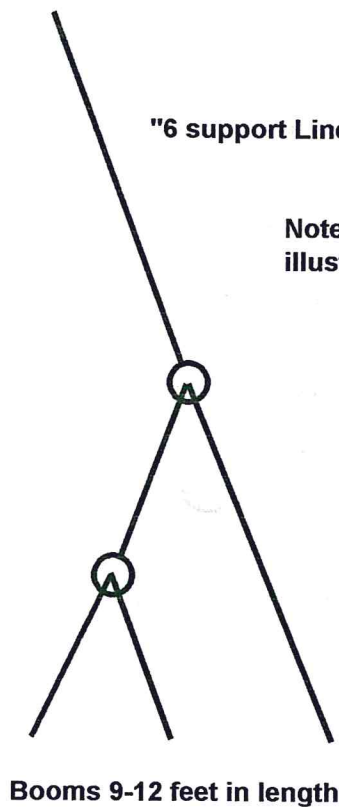
Hello Fellow Sailor - Eckhart Mindelstein

Welcome to the Jiffy Jax sail flaking system!

Congratulations. You are now the proud owner of the fast and reliable JIFFY JAX sail-flaking system. Our proven system will give you years of fast flaking. Please call us at 480-993-5280 if you have any questions or comments.

Key features of your JIFFY JAX system:

- 1 Your new system, with one hook per side, is designed to deploy and stow FAST!
- 2 Your Jiffy Jax system has been custom designed and made to your boat's specifications.
- 3 Your new system requires no sail or sail cover modifications.
- 4 Jiffy Jax are designed for many years of reliable service. Only a shovel is more reliable!
- 5 Your new system is designed for easy installation with simple tools.
- 6 With 3 support lines per side for your boat, sail flaking has never been easier.
- 7 We guarantee your satisfaction!



"6 support Line" style

Note: drawing not to scale. For illustration purposes only

Booms 9-12 feet in length

These hints are a MUST READ prior to installation!

1. Since both ends of lines B and C will be permanently captured, remove all "twist" in them prior to installation (See Fig. 1 of "Measurements and Layouts").
2. To provide better vertical support, consider mounting cheek blocks close to the maximum height allowed and spreader blocks on the top spreader. This also helps prevent "hooking" the fore end of partial battens on the Jiffy Jax halyard line as the mainsail is lowered.
3. Always tape the spliced eyes of lines B and C in place on the boom and check clearance with outhaul cleats, etc. prior to drilling holes! "Measure twice, drill once!"
4. To avoid hitting internal lines or wires when drilling holes in the mast or boom, wrap masking tape around the drill bit at the appropriate depth to avoid excess penetration
5. When installing eyestraps and cheek blocks, the best procedure is to center punch the first hole, drill and install the first pop rivet and then center punch, drill and install the second rivet. This procedure will give you perfect alignment.
6. If you desire, self-tapping screws may be substituted for all pop rivet applications, and shroud mounted cleats may be substituted for supplied mast mounted cleats.
7. We recommend using supplied lanocote on stainless screws to avoid electrolysis. We also recommend dulling stainless screws to avoid internal line or wire damage.
8. If your spars are painted and not anodized, we recommend bedding all hardware with 3M 5200 (or other bedding material) to avoid potential paint blistering.
9. If you plan to "hook" the Jiffy Jax system on your booms' reefing horns when in the stowed position, skip steps 6-9 of the INSTALLATION INSTRUCTIONS.
10. You will need to cut and seize the ends of the "A" lines plus cut and seize the shock cord to the proper length. The easiest way is to first wrap the point of cut with masking tape, then use scissors to cut through the tape, finally burn with a match or torch and remove tape.
11. If your kit includes mast mounted cheek blocks, verify that the barrel of the rivet gun will fit between the cheek block mount hole and the block body before going up the mast to rivet the cheek blocks in place! If there is not enough clearance you will need to buy a different collet or rivet gun, or use stainless screws.
12. **Never use the Jiffy Jax system as a topping lift! The system is not designed to support the full weight of your boom and mainsail!!**

Tools you will need...

Hammer
 Drill with 3/16" and 5/32" bits
 Tape measure
 Hog ring pliers (best) or pliers
 Phillips screwdriver
 Lighter (best) or matches

Masking tape
 Center Punch
 Rivet gun with 1/8" collet (typical on most rivet guns)
 Scissors (best) or knife
 File (to dull screw tips)

Bill of Materials:	Qty	U/M	Qty Boxed
1. 1/4" Double braided line	123 163'	ft.	163'
2. 1/4" cheek (or spreader) blocks	2	ea.	2
3. Low profile eyestraps	6	ea.	6
4. Spreader eyestraps (if req'd)	2	ea.	N/A
5. 1" Stainless utility rings	4	ea.	4
6. 3/16" Aluminum pop rivets	20	ea.	22
7. 5" Mast cleats	2	ea.	2
8. Phillips #10 x 1.5" screws	4	ea.	5
9. Lanocote grease	0.1	ounce	0.1

Drawback Kit:	Qty	U/M	Qty Boxed
1. 3.25" Security hooks	2	ea.	2
2. 1/4" shock cord - 2 pieces	4	ft.	4'
3. Large eyestraps	2	ea.	2
4. 3/16" Aluminum pop rivets	4	ea.	4
5. Hogrings	8	ea.	10

Installation Instructions:

- Note each set of lines (Port/Starboard) A, B, and C are marked with masking tape and interwoven.
- Remove twist, then tape spliced ends of lines B and C onto boom (Fig. 2). Note distances (inches) from sail tack to points 1, 2, 3 is:

31	63	95
----	----	----
- Re-do step 2, as required, to avoid outhaul cleats, etc. You can adjust each eyestraps 8 or more inches fore or aft. Avoid large "gaps" between any two eyestraps, and match both Port and Starboard. The goal is approximately equal spacing BETWEEN eyestraps on each side.
- Install low profile eyestraps vertically (Fig. 2) along boom with included rivets (pre-drill 3/16"). Screws may be substituted. Capture the correct braided eye (lines B, C) with each boom eyestraps!
- Install cheek* blocks, Fig. 3A, minimum

 and maximum

 feet above boom gooseneck with supplied rivets fore of mast mid-line. Thread Line A through blocks (aft to fore) and deploy Jiffy Jax.
- Capture hogringed end of shock cord in large eyestraps Port and Starboard (Fig. 3B). Install large eyestraps (pre-drill 3/16") near front of mast 6-12" below mid-level boom line to allow minimum 8" shock cord tensioning
- Thread bitter end of shock cord through snap hook attachment hole. Flatten lines B and C along the boom and clip B and C into the snap hook (Port and Starboard).
- With lines B and C captured in the snap hook, tension the JIFFY JAX into the "stowed" position by simultaneously pulling on the halyard and the shock cord until shock cord is adequately tensioned.
- Mark location for shock cord tie-off. Release lines B and C, double hog-ring tie-off and cut off excess cord.
- Install cleats on mast at desired height above boom level (pre-drill 5/32" holes for self-tapping screws) and fore/aft position to stow excess line when Jiffy Jax is stowed or deployed. Trim off excess line A.

*If Spreader blocks, install on top spreader 12-16" from mast.

Fig. 2. Exploded view of side of boom.

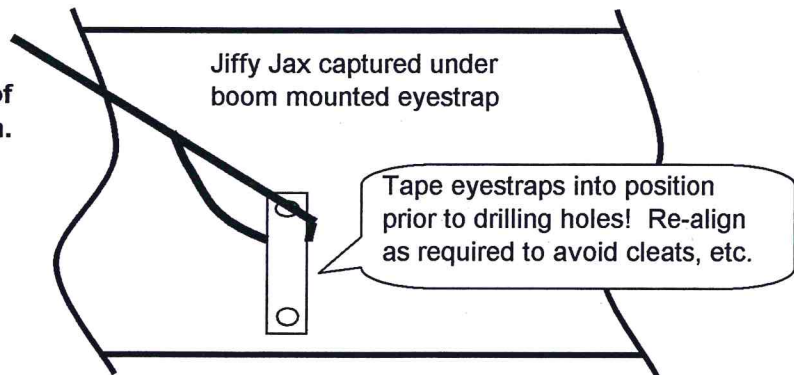
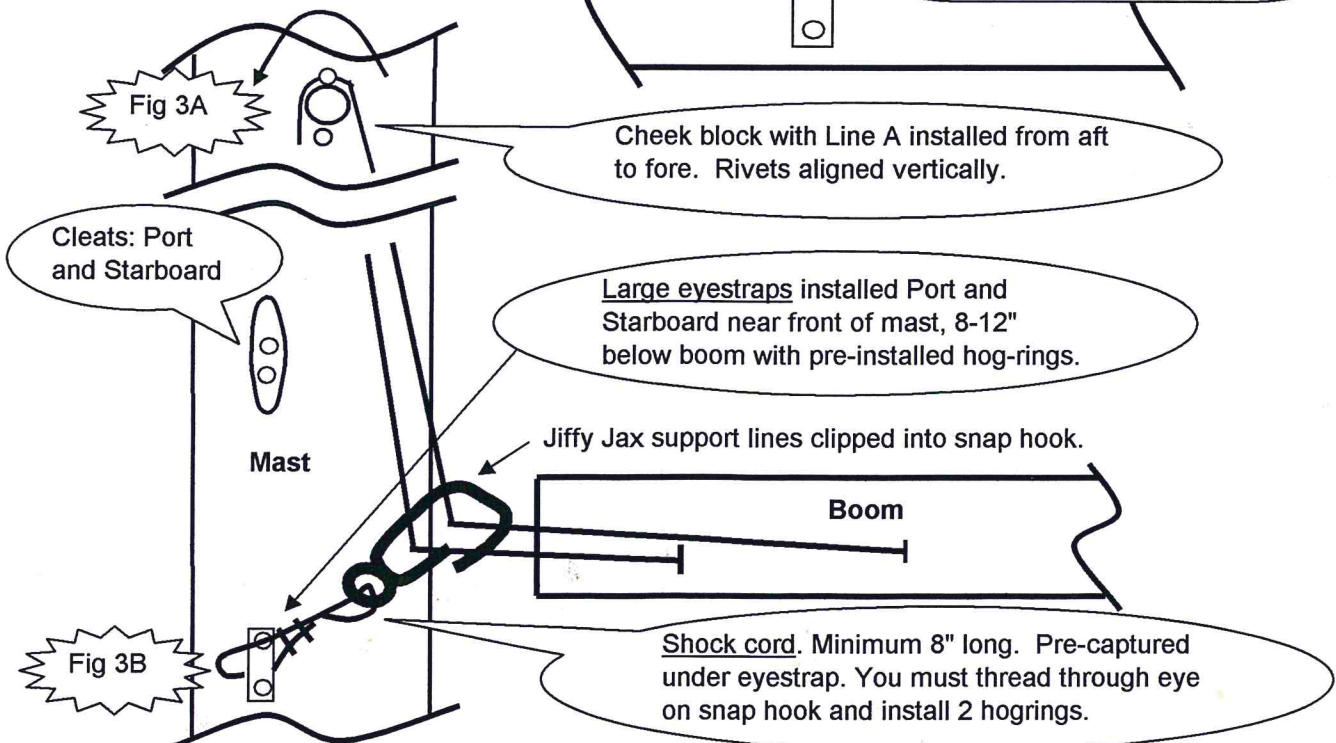


Fig. 3 - Stowed Jiffy Jax



Jiffy Jax deploy instructions...

- 1 Double check the topping lift to assure boom support upon sail lowering. Tighten as necessary.
- 2 On portside (or starboard) release the Jiffy Jax support lines from the snap hook.
- 3 Un-cleat the Jiffy Jax halyard line. Raise the Jiffy Jax system, then cleat the halyard off enough for the support lines to secure the sail, but **not so much as to carry the weight of the boom once the sail is lowered!!**
- 4 Repeat #2 and #3 on the starboard (or port) side.
- 5 Head into the wind, slow down, drop the main. As it is coming down, "train" your main, by assisting the Jiffy Jax with extension pressure on the leech and manual flaking.
- 6 Sail tie the main.

Jiffy Jax stow instructions...

- 1 Once the main is secured with sail ties, release the portside (or starboard) Jiffy Jax halyard line.
- 2 Pull all portside (or starboard) support lines forward toward the gooseneck.
- 3 Clip all support lines into the snap hook
- 4 Tension the Jiffy Jax halyard line until there is no slack drooping below the boom.
- 5 Cleat off the halyard line. Repeat steps 1-4 on starboard (or portside)
- 6 Cover sail, sit back and relax!

Jiffy Jax guarantee

Your satisfaction with your new Jiffy Jax system is fully guaranteed. Should you be unhappy with your system for any reason within 90 days of purchase, contact us and we will give you return instructions. Upon receipt of the system (all except fasteners), we will credit back your credit card - no questions asked!

Should any component of your system - blocks, cleats, line, etc. fail due to poor workmanship or material quality within 5 years of purchase, we will replace the failed components at our expense.