

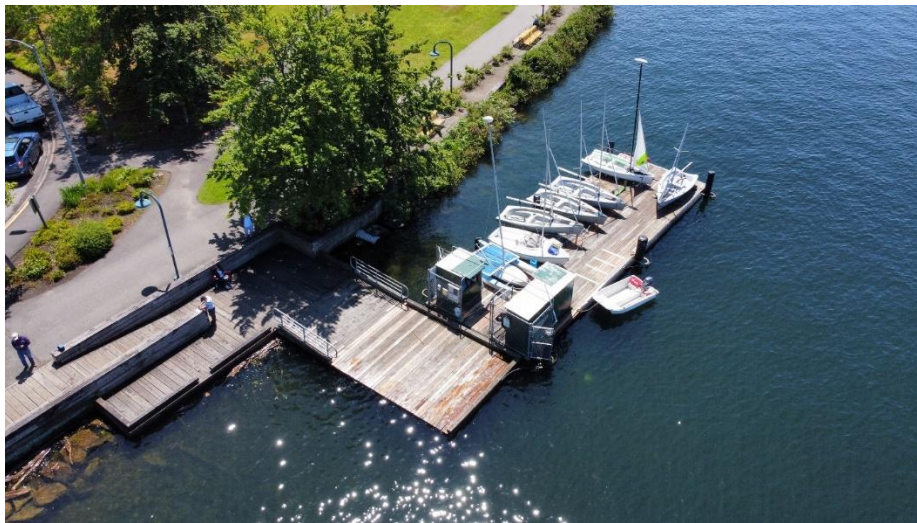
RS Zest: Rigging at Renton Sailing Center

Single page Summary Checklist

- Place boat on dock. Wind direction un-important initially
- UV sock on fence gate
- Step fully-furled mast. Secure secondary pin
- [If using jib, attach jib tack line to bow. Store jib bag on fence]
- Untie dock line
- Attach rudder : kicked up position. Secure secondary pin.
- **PLACE BOAT IN WATER**, head to wind.
- Drop centerboard. Attach plastic retaining ring.
- Unroll the mainsail by rotating the mast. Reef as desired.
- Attach boom. Attach outhaul to clew (keeping boom horizontal)
- Attach vang to mast.
- Trim downhaul
- [if using jib: heel boat and thread halyard through padeye to cleat on mast]
- Go sailing.

RS Zest: Rigging at Renton Sailing Center

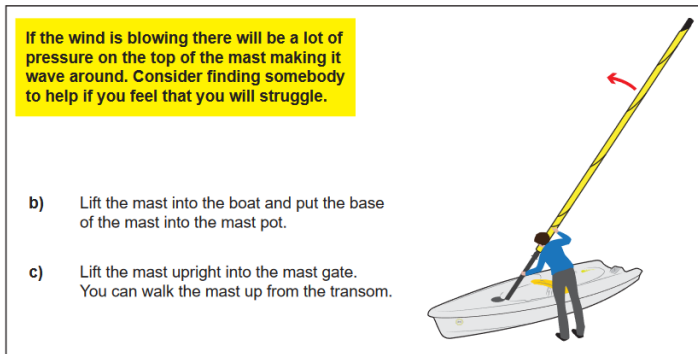
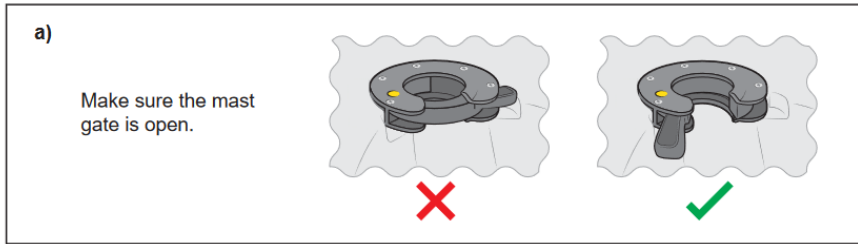
Step 1: Unlock and remove the Zest from the rack and place in any available space on the dock. Wind direction does not matter at this point. Get plenty of help to unrack boats in upper positions.



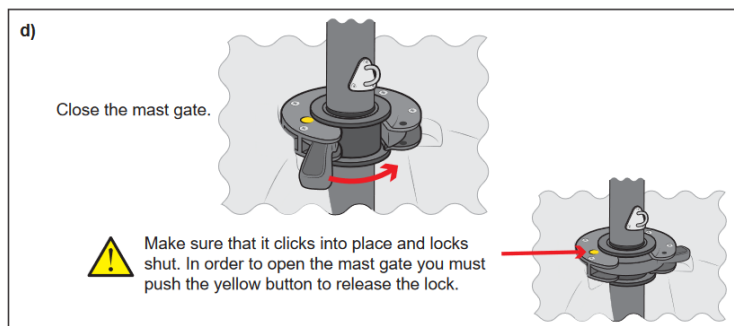
Step 2: It is now time to step the mast. Remove UV Sock from mast and furlled main. Store on the fence by gate.

Do not unfurl the sail. This will be completed when the boat is launched and head to wind.

Press the yellow button down and open the gate. Open the mast gate (currently requires some force until we get through the break-in period). It must be fully open as shown:



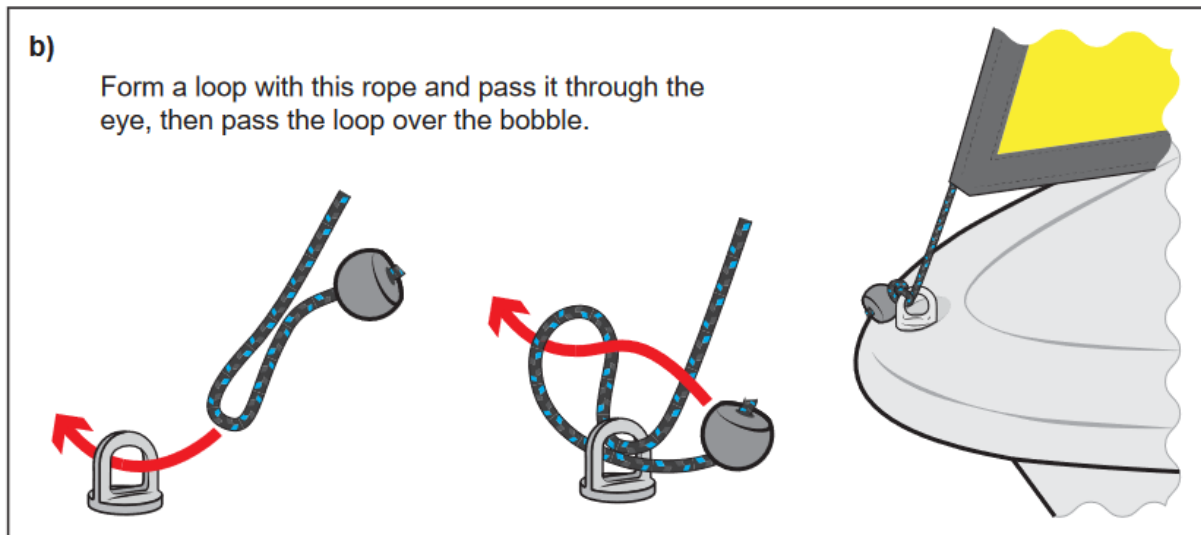
Raise the mast against the mast step and close the mast gate. Make sure the yellow button pops up. Insert the secondary safety pin¹ as follows: place white ring below the mast gate and horizontally touching the lower gate surface. Insert pin – it should go through the gate and through the white ring.



¹ stored in its hole in the mast gate.

Step 3: If Using Optional Jib: (not recommended for single-handed or if reefing main; recommended for doublehanded)

Attach the jib tack to the bow of the boat:



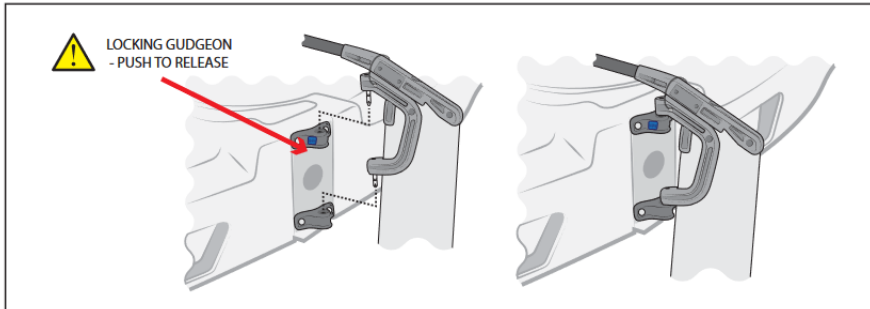
Reeve jib sheet through fairleads and cam cleats. Finish bitter ends with Figure 8 knots.

Leave the jib flaked on the foredeck. Note: Reeve the halyard later once the boat is launched and main unfurled.

Store sail bag on fence by gate.

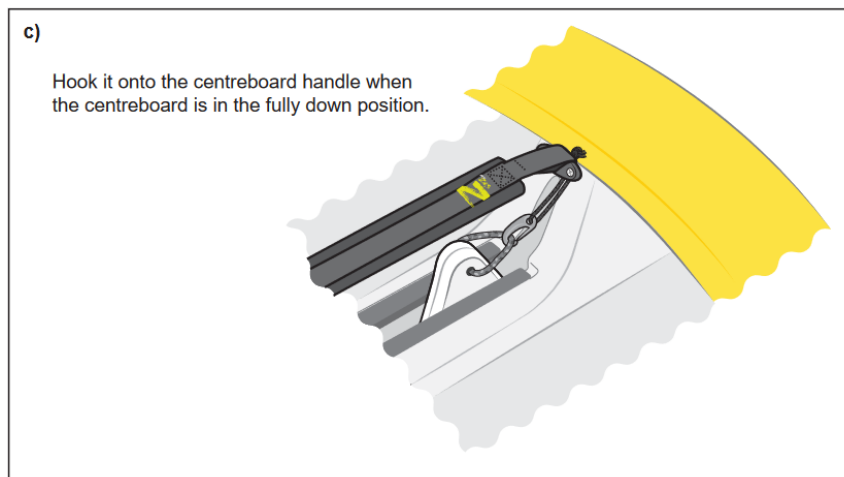
Step 4: Untie bow dock line from head of centerboard.

Step 5: Attach the rudder onto the transom (rudder should be in the kicked-up position – not in the vertical position as shown below). Ensure both pintles/gudgeons are aligned and fully seated. Install the secondary safety hitch pin.



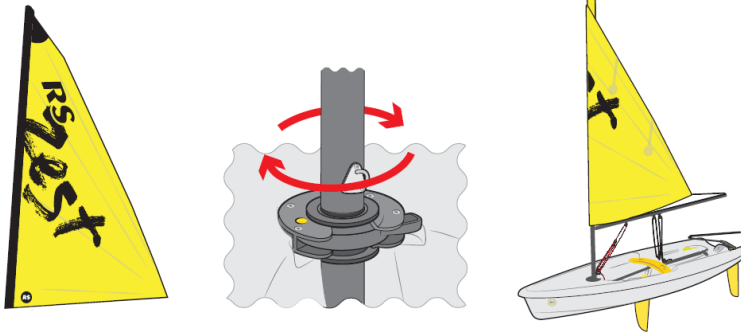
Step 6: **PLACE THE BOAT INTO THE WATER** head to wind and tie mooring line to dock.

Step 7 : Drop the centerboard and attach the plastic retaining hook

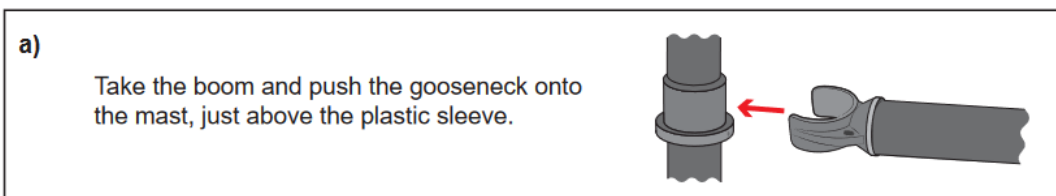


Step 8: Unhook white webbing from hook at clew. Unroll the mainsail by rotating the mast. To reef, unroll the sail partially.
Do not use the jib if reefing.

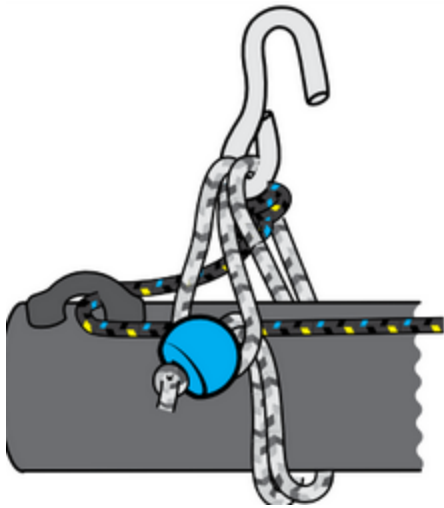
- c) Twist the mast so that the sail wraps around it, until you reach the appropriate size of sail.



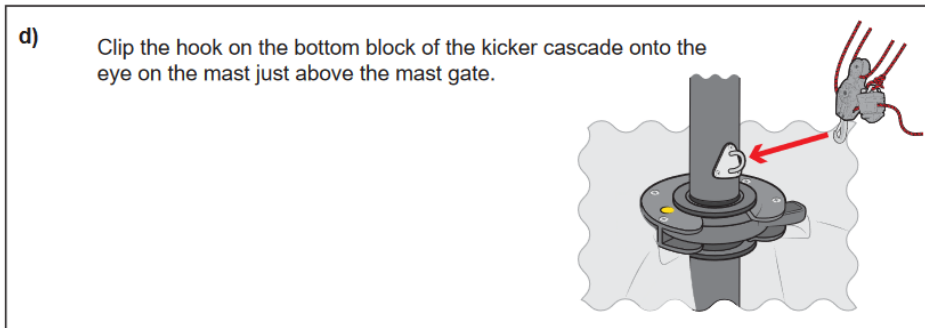
Step 9: Attach the boom to the mast, noting that the attached vang is pointed downward. *NOTE: Install above the sleeve, and then gently lower onto the sleeve.*



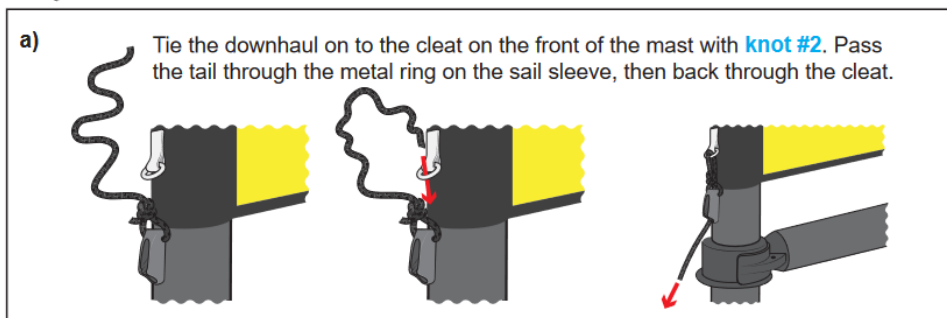
Then attach the outhaul to the clew, which will hold the boom up and keep the boom perpendicular to the gooseneck fitting. *Do this promptly so as to not put much stress onto the boom fitting at the gooseneck.* Visually verify that the clew strap (shown below) remains attached to the outhaul hook:



Step 8: Attach the vang to the mast and trim vang:

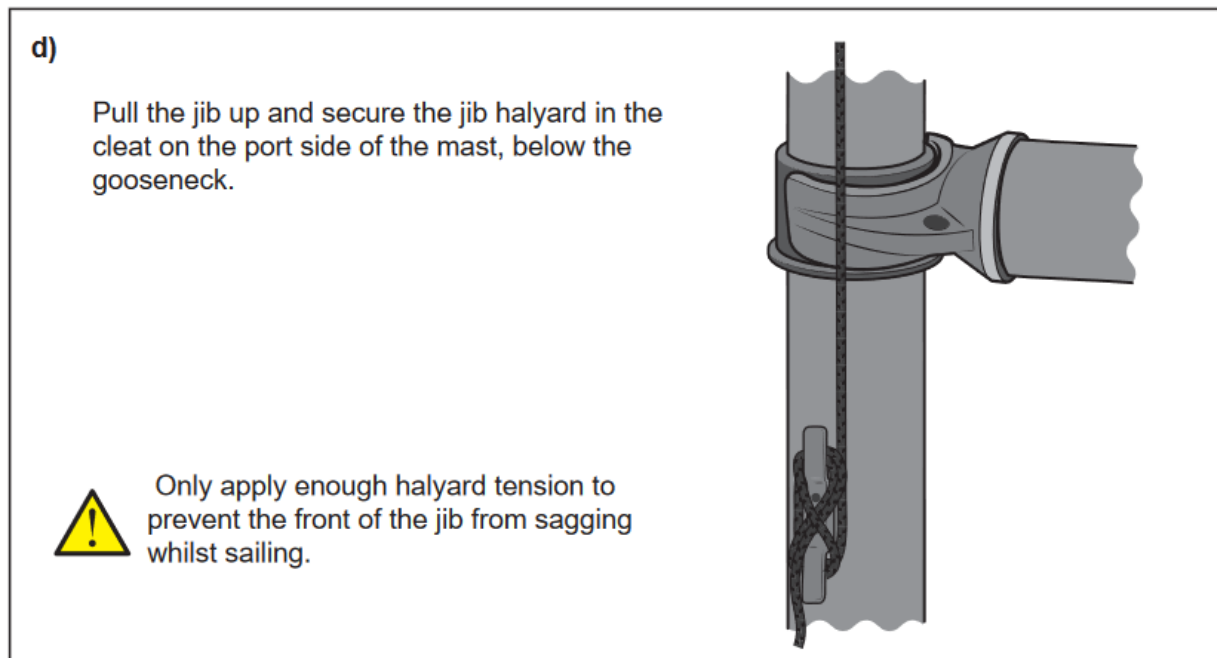
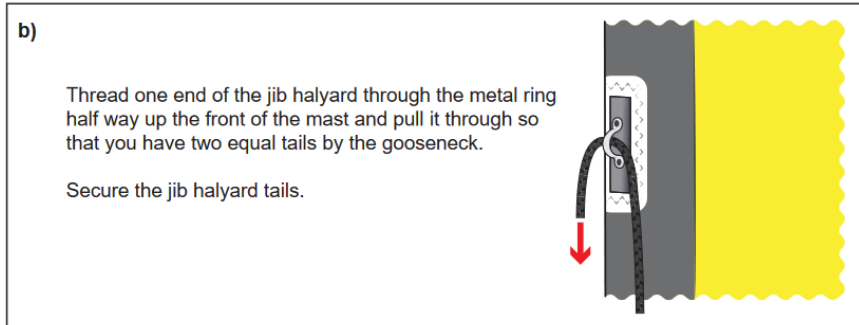


Step 9: Trim downhaul for conditions



Step 11: If using the jib:

Careen boat to reach jib padeye $\frac{1}{2}$ way up mast and reeve halyard, raise the sail, and cleat to the port side of the mast.



Only apply enough halyard tension to prevent the front of the jib from sagging whilst sailing.

Step 12: Go sailing !!!!

REEFING UNDERWAY:

- Sail a close reach in Safety Position.
- If using jib: unreeve jib halyard but leave tack and sheets rigged.
- Disconnect vang at mast.
- Ease outhaul significantly.
- Wrap sail around mast to desired sail area.
- Trim outhaul.
- Re-connect vang at mast and trim vang

